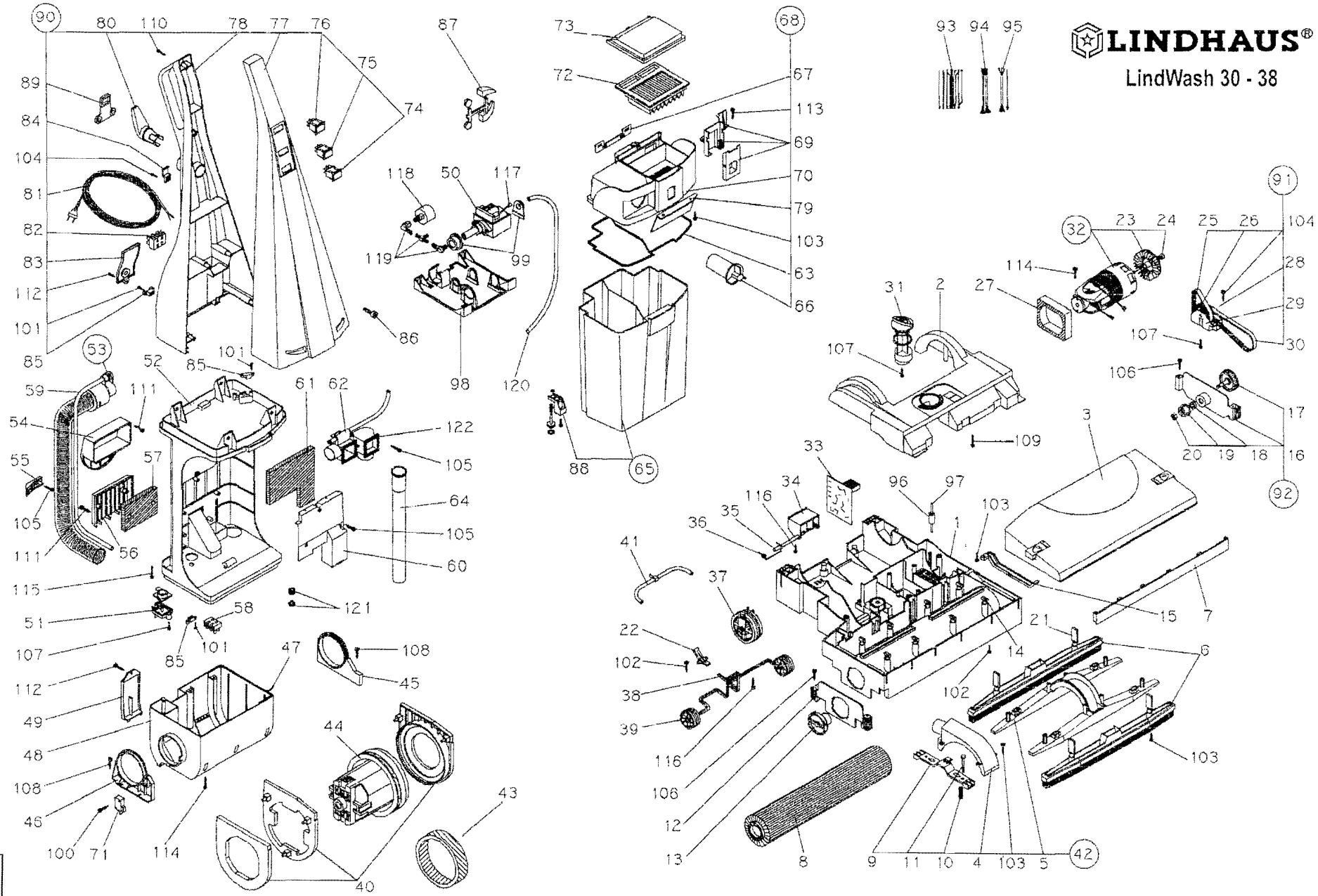


LINDHAUS®

LindWash 30 - 38



16

SPARE PARTS LIST:LW30 - LW38 SCRUBBER DRIER

Export

POS	CODE	DESCRIPTION OF GOODS
1	088181281	BASE HOUSING 30
1	088191281	BASE HOUSING 38
2	088220281	BRUSH MOTOR COVER LIGHT GREY
2	088223681	BRUSH MOTOR COVER WHITE
2	088223781	BRUSH MOTOR COVER SILVER BLUE
3	088230281	FRONT BASE COVER 30 LIGTH GREY
3	088233681	FRONT BASE COVER 30 WHITE
3	088233781	FRONT BASE COVER 30 SILVER BLUE
3	088240281	FRONT BASE COVER 38 LIGTH GREY
4	006660305	CONVEYOR COVER
5	006670305	CONVEYOR 30
5	006680305	CONVEYOR 38
6	088070081	KIT SQUEEGEE 30
6	088080081	KIT SQUEEGEE 38
7	006730112	FRONT BUMPER 30 DARK GREY
7	006740112	FRONT BUMPER 38 DARK GREY
8	088250381	BRUSH ROLLER 30 (12") WITH INSERT BRISTLE 0,15 WHITE
8	088260381	BRUSH ROLLER 38 (14") WITH INSERT BRISTLE 0,15 WHITE
8	088270381	BRUSH ROLLER 30 (12") WITH INSERT BRISTLE 0,20 BLACK
8	088280381	BRUSH ROLLER 38 (14") WITH INSERT BRISTLE 0,20 BLACK
8	087800381	BRUSH ROLLER 30 (12") WITH INSERT BRISTLE 0,25 RED
8	087810381	BRUSH ROLLER 38 (14") WITH INSERT BRISTLE 0,25 RED
9	013360329	CONVEYOR SUPPORT
10	088290009	SPRING NOZZLE (20 pcs)
11	088300009	WRAPPING OF 20 PCS SCREW M4x40
12	087820081	SIDE WHEELS SUPPORT
13	087830081	BRUSH SUPPORT WITH BEARING
14	087491381	WRAPPING OF 20 PCS ROLLER COVER CLIP
15	006781204	BELT COVER
17	060180081	PULLEY
18	013420307	V-RING D.10
19	006790004	DRIVE JOINT BASE
20	085970009	WRAPPING OF 20 PCS NUT M6 Six
21	007381304	RED CLIP SQUEEGEE
22	013700029	BASE LIFT LEVER
23	006820300	FAN PULLEY
24	088310009	WRAPPING OF 20 PCS NUT M5
25	013440300	TIMING BELT 8 MM L.174
26	086430081	DOUBLE PULLEY WITH BEARINGS
27	010580016	MOTOR FILTER
30	013450300	TIMING BELT 8 MM L.327
31	006830104	ADJUSTING KNOB
32	051190080	BRUSH MOTOR R74/35V V.120/60 W.250
32	051200081	BRUSH MOTOR R74/35V V.240/50 W.250
33	023240000	CIRCUIT BOARD V.120
33	023250000	CIRCUIT BOARD V.240
34	006840104	FOOT PEDAL
35	013470009	SHAFT FOOT PEDAL
36	013480009	FOOT PEDAL SPRING
37	085490081	REAR WHEEL ASSEMBLY
38	013290009	FRONT WHEEL SHAFT
39	002260000	FRONT WHEEL-RUBBER

82 022850400 TERMINAL BLOCK 16A 3 POS.
83 006901201 COVER TERMINAL BLOCK
84 001690110 STRAIN RELIEF GREY
85 000070305 CORD CLAMP
86 088390009 WRAPPING OF 20 PCS SCREW M6x20
87 006910112 RUBBER CUP KIT
88 087870081 VALVE KIT WATER TANK
89 006040308 ANTI-TEARING CORD SAFETY GUARD
90 088400281 ELECTRIC PANEL CPL.V.240/50 GREY SCHUKO PLUG
90 088403681 ELECTRIC PANEL CPL.V.240/50 WHITE SCHUKO PLUG
90 088403781 ELECTRIC PANEL CPL.V.240/50 SILVER BLUE SCHUKO PLUG
90 088410281 ELECTRIC PANEL CPL.V.240/50 GREY BRITISH PLUG
90 088420280 ELECTRIC PANEL CPL.V.120/60 GREY
91 087890081 CENTRAL TRANSMISSION SUPPORT WITH BELTS & SCREW
92 087900081 TRASMISSION SUPPORT COMPLETE
93 088540028 WIRES KIT ELECTRIC PANEL
94 023140320 WIRES KIT UPPER HOUSING
95 088550028 WIRES KIT BASE HOUSING
96 006050104 SIDE WHEEL
97 013490009 SHAFT SIDE WHEEL
98 007420304 PUMP HOLDER
99 088430308 PUMP RUBBER SUPPORT
100 085610009 WRAPPING OF 20 PCS SCREW 2,9x16
101 085530009 WRAPPING OF 20 PCS SCREW 2,9x19
102 085540009 WRAPPING OF 20 PCS SCREW 3,5x9,5 TG
103 088440009 WRAPPING OF 20 PCS SCREW 3,5x13 IX
104 085560009 WRAPPING OF 20 PCS SCREW 3,9x16
105 088020009 WRAPPING OF 20 PCS SCREW 3,5x13
106 088450009 WRAPPING OF 20 PCS SCREW 3,5x16 IX
107 086450009 WRAPPING OF 20 PCS SCREW 3,9x13 TG
108 085550009 WRAPPING OF 20 PCS SCREW 3,5x25
109 087250009 WRAPPING OF 20 PCS SCREW 3,5x22
110 085570009 WRAPPING OF 20 PCS SCREW 3,5x32
111 087260009 WRAPPING OF 20 PCS SCREW 3,9x22
112 085590009 WRAPPING OF 20 PCS SCREW 3,9x13
114 085580009 WRAPPING OF 20 PCS SCREW 3,9x19
115 087740009 WRAPPING OF 20 PCS SCREW 3,9x45
116 088460009 WRAPPING OF 20 PCS SCREW 4,8x13 TG IX
117 023500028 CORD WITH THERMAL PROTECTOR
118 023380000 PRESSOSTAT PUMP
119 088470000 KIT CONNECTION TUBE
120 088570000 TUBE D.4 L.760 mm
121 088480000 KIT WATER FILTERS
122 088490000 N.2 GASKET CONVEYOR
123 013590316 FILTER
124 088560000 WRAPPING OF 20 PCS O-RING 2021
125 013520315 DOSING CUP GASKET
126 007490300 TRIMMER
127 000460307 STRAIN RELIEF V.100/230/240
127 010830307 STRAIN RELIEF V.100/120

40 088320381 GASKET KIT VAC.MOTOR
41 088500000 BASE TUBE KIT
42 088330081 NOZZLE CONVEYOR 30 KIT
42 088340081 NOZZLE CONVEYOR 38 KIT
43 013540316 VAC.MOTOR FILTER
44 087850080 VACUUM MOTOR V.120 WITH GASKETS
44 087850081 VACUUM MOTOR V.240 WITH GASKETS
45 006950404 LEFT MOTOR HOUSING SUPPORT
46 006940404 RIGHT MOTOR HOUSING SUPPORT
47 088510000 GASKET MOTOR HOUSING
48 006261233 MOTOR HOUSING
49 006961204 COVER MOTOR HOUSING
50 023300000 PUMP V.100/55
50 023290000 PUMP V.120/60
50 023280000 PUMP V.240/50
51 087860081 VALVE KIT
52 088351201 UPPER HOUSING
53 088520081 SUCTION HOSE ASSY.
54 007010101 TRANSPORT HANDLE
55 007021204 HOSE HOOK
56 007031204 FILTER COVER
57 013550316 EXHAUST FILTER
58 021680400 TERMINAL BLOCK 16A 2 POS.
58 022850400 TERMINAL BLOCK 16A 3 POS.
58 023090400 TERMINAL BLOCK 16A 4 POS.
59 088530000 TUBE D.4 L.730 mm
60 007051204 AIR CONVEYOR
61 013560316 FILTER AIR CONVEYOR
62 088360381 CONVEYOR WATER/AIR
63 013570315 FILTER HOUSING GASKET
64 088370381 INTERNAL TUBE WITH GASKET
65 087880081 WATER TANK
66 007083101 DOSING CUP
67 007091201 LATCH TANK
68 088383101 FILTER HOUSING COMPLETE
69 088140181 LATCH KIT FILTER HOUSING
70 006933101 FILTER HOUSING
71 023520000 MICROSWITCH
72 013580000 WATER FILTER
73 007103101 FILTER COVER
74 023460000 MAIN SWITCH
75 023470000 VACUUM SWITCH
76 023450000 PUMP SWITCH
77 006880201 FRONT HANDLE GREY
77 006883601 FRONT HANDLE WHITE
77 006883701 FRONT HANDLE SILVER BLUE
78 006891233 REAR HANDLE
79 007223101 ANTISPLASH FLAP
80 007110101 ROTATING CORD HOOK
81 020200312 CORD.2x1 SCHUKO PLUG
81 020780312 CORD.2x1 UK PLUG
81 021300312 CORD 2x1 AUSTRALIAN PLUG
81 020990312 CORD 2x1 SWISS PLUG
81 023340320 CORD 2x1,25 10,7 MT.(JAPAN)
81 022480020 CORD 3x18 12,5 MT. USA PLUG YELLOW
82 021680400 TERMINAL BLOCK 16A 2 POS.